

GORDON ROAD, NUNHEAD, SE15

LEASEHOLD

£850,000



SPEC

Bedrooms : 3
Receptions : 1
Bathrooms : 1

Lease Length: 115 years
Service Charge: £2,200
Ground Rent: £300

FEATURES

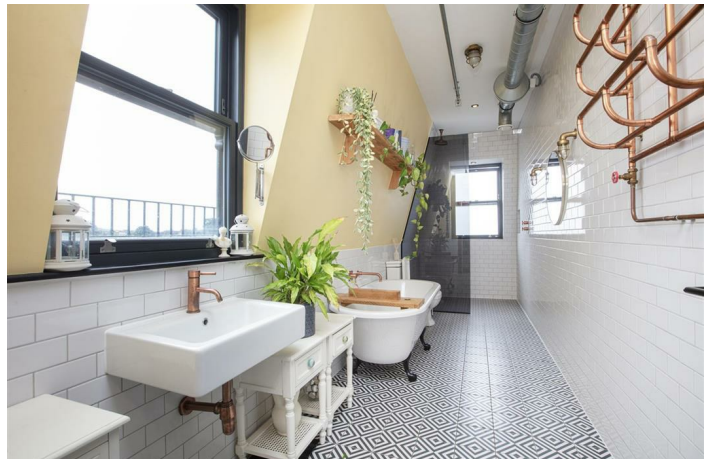
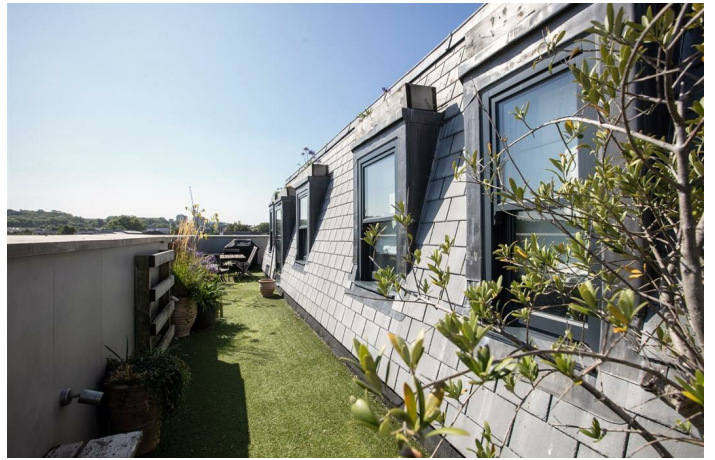
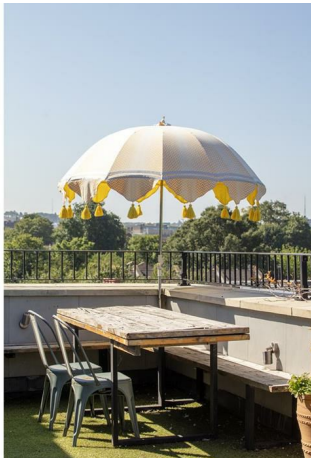
Amazing Top Floor Wrap Around Terrace
Over 1200 sqft Not Including Terraces
Impressively Proportioned
Plenty of Storage
Handsome Building
Fantastic Styling



GORDON ROAD SE15
LEASEHOLD



GORDON ROAD SE15
LEASEHOLD



GORDON ROAD SE15
LEASEHOLD



GORDON ROAD SE15
LEASEHOLD



Astounding Three Bedroom Parkside Penthouse with Vast Wrap-around Terrace.

Seeing is believing this spectacular top floor three bedder! Taking the entire penthouse floor of a landmark parkside pub conversion, it boasts a slick tasteful finish, noteworthy proportions, high ceilings and a mutli-aspect private terrace that ensures you're soaking in the sun all day long. There are sweeping views throughout the accommodation as well as top notch fixtures and fittings. The property comprises a huge open-plan living space, three gorgeous bedrooms and a show-stopping bathroom. An east/west orientation means you're perfectly placed for sunrise and sunset. Both terraces enjoy an amazing sense of privacy - They're perfect for entertaining and al-fresco dining. One can enjoy each meal of the day while catching rays. Given that it's the tallest building in sight, it also makes a sunbathers dream!

Location-wise you're on the fringes of the newly landscaped and enlarged Harold Moody Park - your guests won't want to leave! Transport is also great - you are close to three stations: Nunhead offers regular services to Victoria and Blackfriars, Queens Road Peckham will get you into London Bridge in five minutes (and Victoria in slightly longer) while Peckham Rye serves all three London termini. The two latter stations each also enjoy the London Overground line. Nunhead Lane, at the southern end of the road past the green, is a good place for local grocery shopping - it has a wet fish shop, a proper bakery, a butcher and a greengrocer. Nearby lordship lane is another amazing hub for bars, boutiques and bustle.

The exterior takes a prized corner spot along the much-loved Gordon Road. You're bordering a lovely green space and the building enjoys some exceptional decorative touches including external tiling and period-style lanterns. A secure entry system with Banham locks leads inward to your slick and quirky communal hall where astro turf and industrial metal staircase with open treads and risers set the tone. The building enjoys a really community friendly vibe with a shared Whatsapp group. Ascending to the third floor you find access to the flat. A light, bright and lofty open-plan living area greets you with gorgeous oak flooring, high ceilings, integrated lighting a wonderful dual aspect. There's a wide kitchen with granite counters and butler sink. Appliances include a SMEG five ring gas range, integrated washing machine and a neat integrated dishwasher.

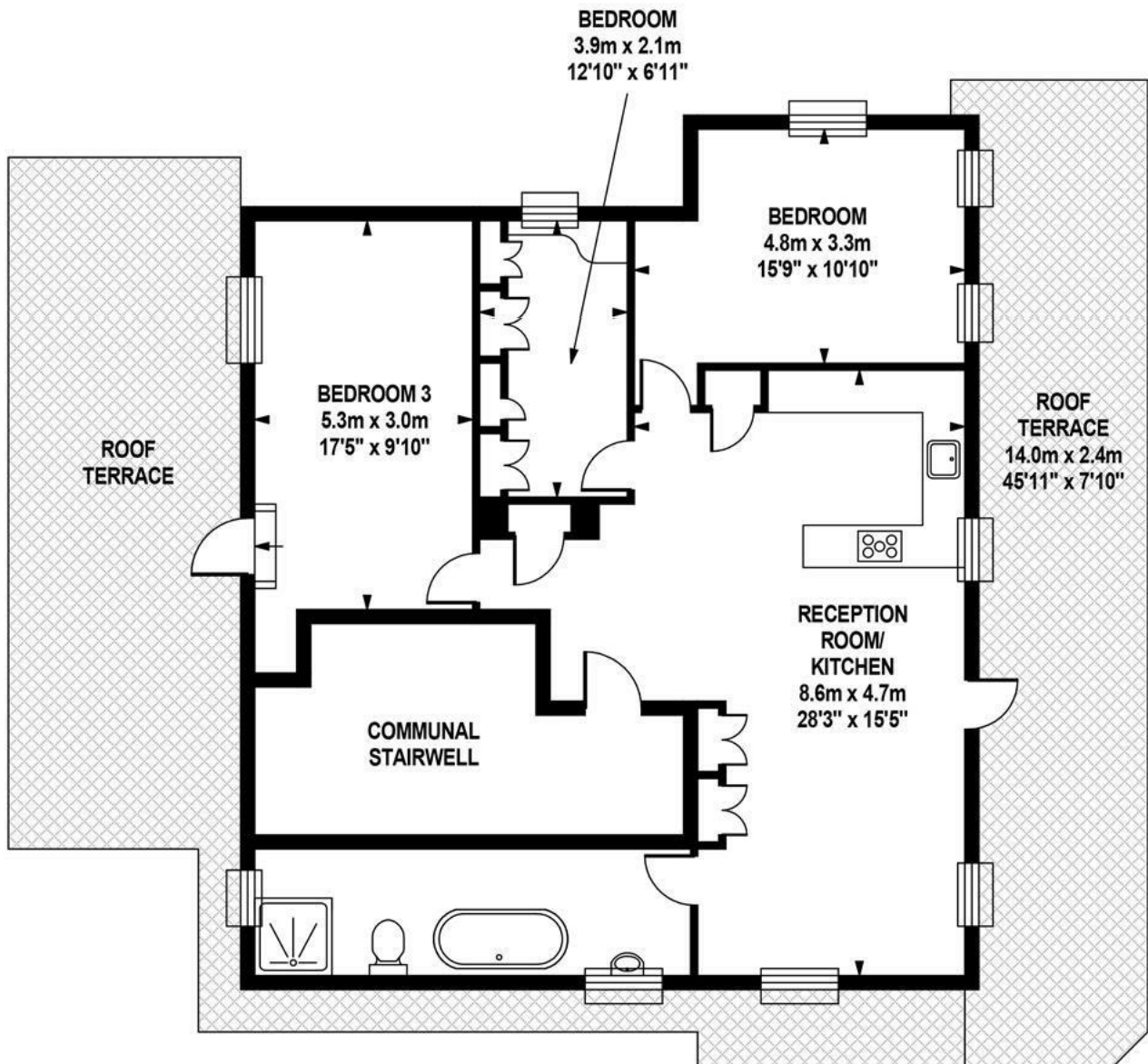
The seating area will host a large L-shaped sofa and it faces onto beautiful bespoke cabinetry with media space, book shelves and low level units. Steps lead outward to your pucker easterly terrace which soaks in every last drop of morning sun. Leafy treetop views of Peckham stretch forth, all the way to Canary Wharf. The uniquely spacious (and dishy) bathroom sits off the lounge with an airy dual aspect, swanky wash hand basin, roll top bath, wet-room style shower and some glorious brushed brass fixtures. There's a matching heated towel, wall lights and wall taps for good measure. Bedrooms one and two are accessed to the rear of the kitchen. The larger is dual aspect and has plentiful fitted storage - finished in a warm terracotta colour. Bedroom two, currently arranged as a comfortable study, enjoys a wall of floor-to-ceiling storage, integrated curved desk and a vista toward the 'Walkie-Talkie'. Last but not least comes bedroom three. Currently laid out as a lavish formal dining space, it boasts magnificent moody wall tones, integrated lighting and access to your fab westerly terrace from whence you'll preside over yet more leafy loveliness.

You're within a 10-15 minute walk of all that Peckham has to offer. The massively popular 'Frank's Cafe' is great for a summer pint and some fab city views. Peckham Bazaar is a much-loved local watering hole - it's just a moment's stroll. Or, for any amount of exotic produce, nip down to Rye Lane which is equally close. The Bussey Building offers a great mix of culture and social fun. Nearby Lordship Lane has just about everything to save you heading to town - boutiques, cafe's, deli's, pubs and clubs - it's a real plus. Peckham Rye Park or beautiful, peaceful Nunhead Cemetery are close by for a Sunday stroll. Sydenham Hill Woods is a quick drive for yet more leafy r&r as is the Horniman Museum, South London Gallery and the Hannah Barry Gallery.

Tenure: Leasehold

Lease Length: 115 years


Council Tax Band: D




THIRD FLOOR

Approximate Internal Area :-
101.27 sq m / 1090 sq ft

GORDON ROAD SE15
LEASEHOLD

Energy Efficiency Rating		
	Current	Potential
Very energy efficient - lower running costs		
(92 plus) A		
(81-91) B		
(69-80) C		
(55-68) D		
(39-54) E		
(21-38) F		
(1-20) G		
Not energy efficient - higher running costs		
	83	83
England & Wales	EU Directive 2002/91/EC 	

Environmental Impact (CO ₂) Rating		
	Current	Potential
Very environmentally friendly - lower CO ₂ emissions		
(92 plus) A		
(81-91) B		
(69-80) C		
(55-68) D		
(39-54) E		
(21-38) F		
(1-20) G		
Not environmentally friendly - higher CO ₂ emissions		
England & Wales	EU Directive 2002/91/EC 	

All information supplied should be checked by your solicitor prior to exchange of contracts. Lease details, measurements, floorplans and photographs are displayed for guide purposes only. We have not carried out a structural survey and the services, appliances and specific settings have not been tested.

